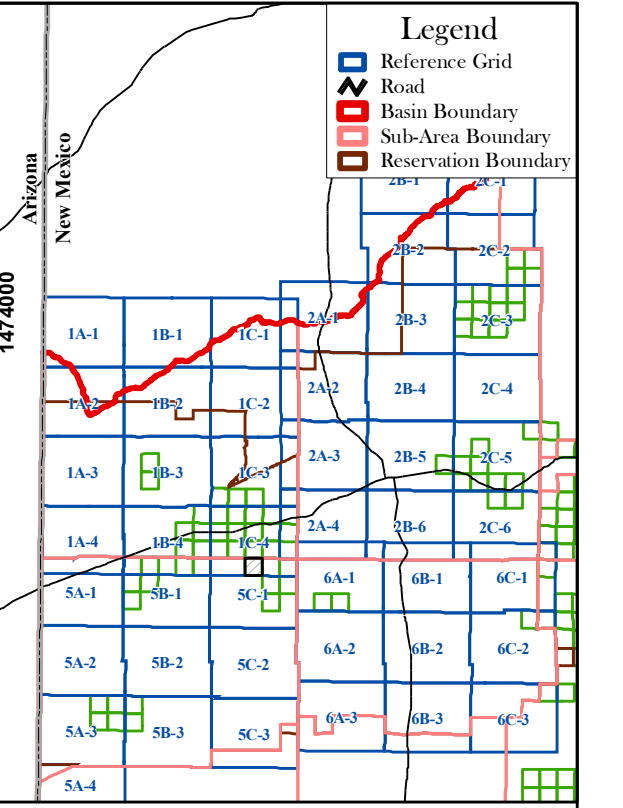
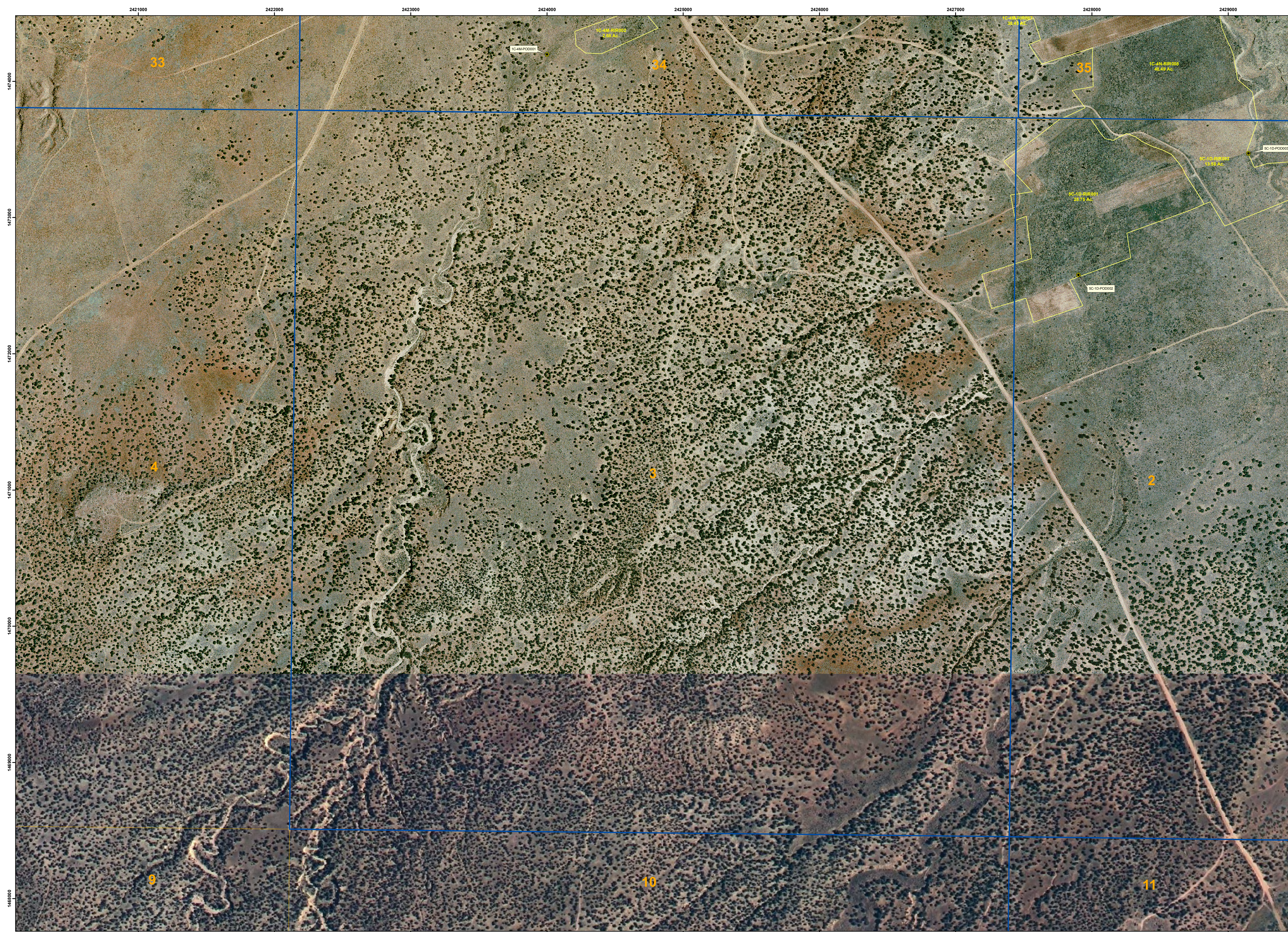


2421000 2422000 2423000 2424000 2425000 2426000 2427000 2428000 2429000

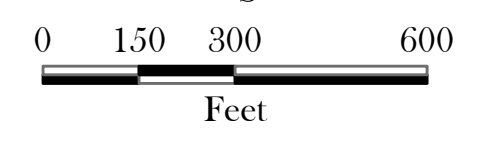
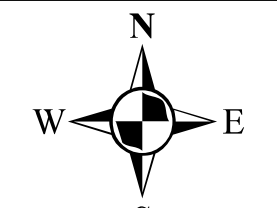
2421000 2422000 2423000 2424000 2425000 2426000 2427000 2428000 2429000



INDEX

LEGEND

- POINT OF DIVERSION (RUNOFF)
- POINT OF DIVERSION
- SPRING
- IRRIGATION PIPELINE
- IRRIGATION CANAL
- STOCKPOND (MAN-MADE)
- RESERVOIR
- IRRIGATION PROJECT ACREAGE
- NON-PROJECT ACREAGE
- RESERVATION BOUNDARY
- SUB-AREA BOUNDARY
- TOWNSHIP/RANGE LINE
- SECTION LINE
- MAP INDEX LINE



March 2007

Labels that are truncated appear on an adjacent map.

Map is displayed in New Mexico State Plane Coordinate System, West Zone, NAD 1983.

Background Sources:

Aerial photography exposed July, 2001 by New Mexico Aerial Surveys, Inc. of Albuquerque, New Mexico.

Digital Orthophoto Quarter-Quadrangles were produced by the New Mexico Geospatial Data Acquisition Coordination Committee (2005)

Section, Township, and Range lines originated from the Bureau of Land Management's (BLM) Geographic Coordinate Data Base (GCDB), received from EnviroLogic, Inc.

Township: 9 North Range: 19 West

Zuni River Basin Hydrographic Survey
Irrigated Acreage - Zuni Indian Reservation
Map 5C-1C 1" = 300'

Natural Resources Consulting Engineers, Inc.
 Fort Collins, CO Oakland, CA Asmara, ERTREA

Project Manager:
 L. Niel Allen, P.E., Ph.D.